

Multiple Disk Recording Paths in REAPER

REAPER supports simultaneous recording to two separate disk paths. You can configure tracks to record to either path, or both paths at once, and the configuration can be set per-track. This feature lets you immediately double your disk recording bandwidth, and can provide a fail-safe disk fallback system.

Uses that can benefit from multiple disk recording paths include:

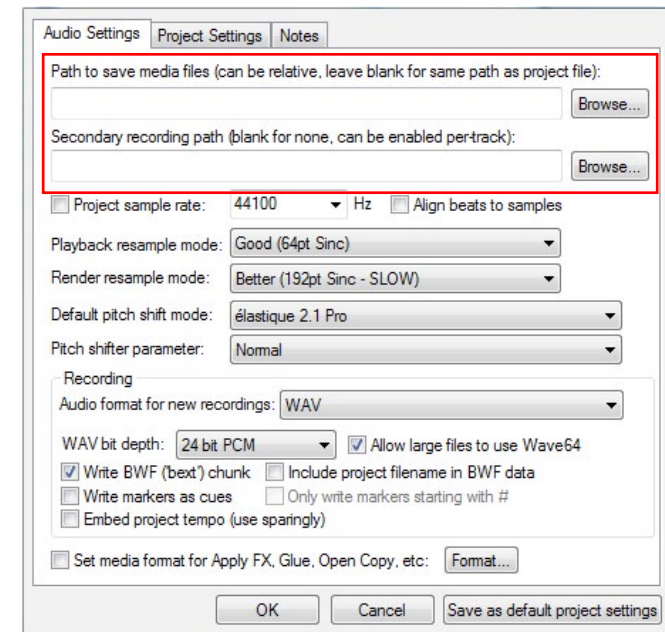
- Rock concert recording, where sound pressure vibrations can degrade disk throughput.
- Exterior location recording, where environmental conditions can degrade disk throughput.
- Very high track count recording, where disk throughput can throttle the number of simultaneous tracks.
- Any critical recording, where a single disk failure can cause recording to fail.

Set up the project...

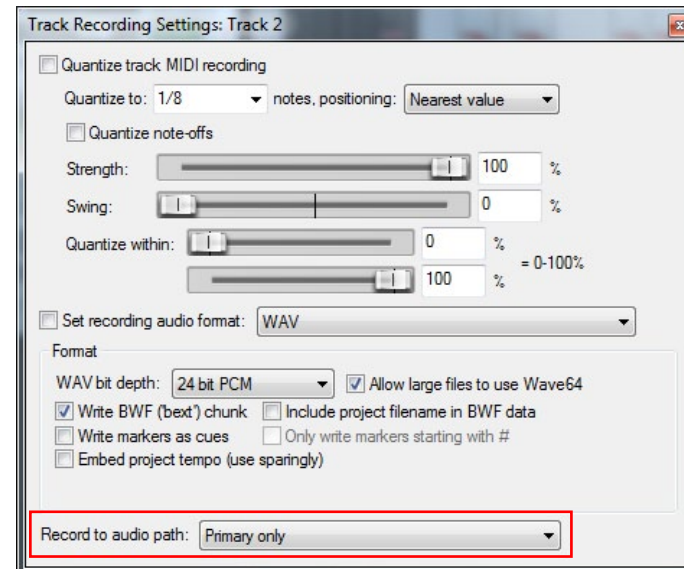
To set the recording paths for a REAPER project: from the main REAPER menu, choose "File/Project Settings/Audio Settings".

Either path can be left blank. If the primary path is left blank, the primary recording path will be set to the same directory where the REAPER project file (.RPP) itself was saved. If you enter a primary recording path, it can be defined as either absolute (so that every project records to the same directory), or relative (so that every project records to a similarly-named subdirectory beneath the project directory).

Once you have defined your recording paths, you may wish to click "save as default project settings" before closing the window.



...then set up the tracks.



To set the recording path configuration for tracks in the project: click the recording configuration button on the track control. This button normally displays "in" (for "record input"), but may have a different appearance if you have a customized theme installed, or if you have changed your default recording configuration settings.

From the recording configuration menu, select "Track recording settings (Input Quantize, Format, etc)". In the track recording settings window, set "Record to audio path" to "Primary only", "Secondary only", or "Primary + secondary as invisible backup".

The last option, "invisible backup", causes the track to record simultaneously to both paths. The secondary path recording is saved as a backup, but not added to the project.

Once you have configured recording paths for a track or a number of tracks, you may wish to save the entire project as a template: from the main REAPER menu, choose "File/Project templates/Save project as template". Or, you may wish to select some tracks and save them as a track template, which can later be inserted into any project: from the main REAPER menu, choose "Track/Save tracks as track template".